

# Sailing Lantern

## Instruction manual LED Lantern Model : SL-BLMD-GOL

Warranty terms are subjected to the laws and regulations of the country or region of purchase.

[Warranty terms](#)

### CONTENTS OF THE PACKAGE

Main body (1), Quick start guide (1), Lanyard (1), Cleaning cloth(1)

### PRODUCT LIABILITY DISCLAIMER

All instructions and warnings here must be strictly followed. Any incorrect use of the product or failure to follow instructions or warnings can result in property damage, personal injury, or death.

The product should be serviced by BALMUDA Support or an authorized BALMUDA service center.

Repairs must be carried out using specified parts only and by qualified service personnel.

**BALMUDA shall not be liable for any damages whatsoever in case of:**

- Product use other than that explained in this manual
- Failure to follow any of the instructions or warnings

## SAFETY PRECAUTIONS

---

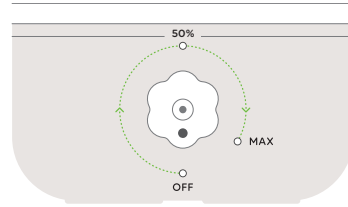
- If any malfunction or abnormality is found, immediately disconnect the AC adapter and power cable, set the volume dial to "OFF", and stop using the product. Continued use under such conditions may result in fire, electric shock, or serious injury.
- Do not disassemble or modify the product. Servicing should only be performed by BALMUDA Support.
- The light source of this product is not replaceable. When the light source reaches the end of its service life, the entire product must be replaced.
- The control device must conform to SELV (Safety Extra-Low Voltage) standards.
- Do not use the product in a place that is near an open flame or a place where the temperatures tends to be high such as a place near a heater.
- Do not submerge in water deeper than 1 meter or for over 30 minutes.
- Do not use a battery pack or product that has been damaged or modified.
- Do not expose the battery pack or the product to fire or to high-temperature environments that exceed the specified operating temperature (above 95°F (35°C)). Battery charging shall be carried out in an ambient temperature range of 41 to 95°F (5 to 35°C).
- Do not use the product while it is covered with a cloth.
- Choose a place that it out of reach of children. Close supervision is necessary when the Product is used near children.
- Only use attachments recommended or sold by BALMUDA. Do not use a lanyard other than the provided. It may not adequately support the weight of the unit and BALMUDA assumes no responsibility for any injury or property damage resulting from the use of non-supplied lanyards.
- Use a USB Type-C to Type-C cable and AC adapter that support an output of 5V/2A or higher to ensure the safe and stable use of this product. Using cables or adapters with insufficient output may result in the product not charging properly.
- If the fluid leaks from the battery, take appropriate measures so that it does not come in contact with your skin or eyes.
- Do not STORE or CHARGE this product places shown below. Doing so may cause fire, electric shock, burns or other injury.
  - A place where water may be splashed on the the product. Exposure to water during charging may compromise the waterproof performance and may cause malfunction.
  - A humid place.(Exposure to excessively high humidity during charging may compromise the waterproof performance and may cause malfunction.)
  - A place where the temperature reaches higher than 95°F (35°C) such as a place near heater.
  - A place where the product is exposed to direct sunlight.
  - A place with in reach of children.
  - A place unstable place.
- The electrical connection during the charging operation should be done indoors.
- Do not charge when the USB socket is wet.
- When using in places where water may splash, please make sure to securely close the USB cover.
- Water resistance performance (IP rating) is limited to when the socket cover is closed.
- Water resistance is not a permanent feature and will deteriorate over time with normal use.

## HOW TO USE

---

### Turning on the lantern

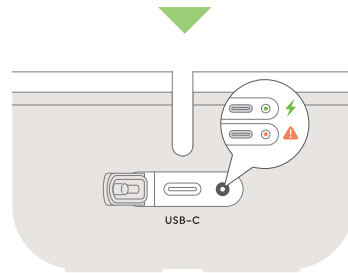
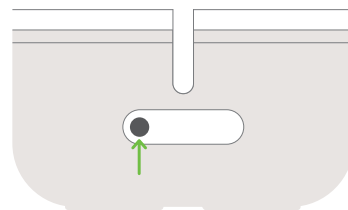
Turn the adjustment dial clockwise to turn it on. Turning it further to the right increases the brightness. The color shifts from a warm color to a warm white depending on the brightness. When the notch is at the very top, the brightness is about 50% of the maximum. If you turn the notch to the left until it is at the very bottom, the light turns off completely.



### Charging

When the rechargeable battery level is low, the LED light (main light source) and the charging indicator will blink to notify you. The charging indicator is inside the USB-C cover. Press the raised part on the side opposite the adjustment dial to open the cover.

Connect your USB-C cable to charge.  
When charging starts, the indicator turns on.  
When charging is complete, the indicator turns off.



#### Note

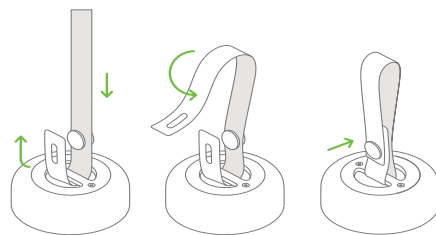
- Use a USB Type-C cable and power adapter rated for output of 5 V/2 A or higher. If you use a cable or adapter with insufficient output, the product may not charge properly.
- Use a USB Type-C to Type-C cable. Please note that this product cannot be charged with a USB Type-A to Type-C cable.

### Attaching the lanyard

Attach it as shown in the illustration. Make sure the snap button is securely fastened at the overlapping section of the lanyard.

#### Caution

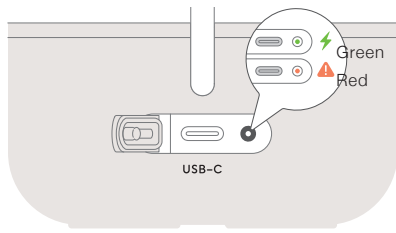
Do not use any lanyard other than the one included.



### Care

Before cleaning, make sure the USB Type-C to Type-C is disconnected and the power is off. Please gently wipe the product with the included microfiber cleaning cloth for regular care. If it comes into contact with saltwater or sand, rinse it thoroughly with clean water to remove any salt or sand, especially around the dial area. After confirming that no residue remains, allow the product to dry completely, and then gently wipe it with the included microfiber cleaning cloth.

## Error indications and remedies



This product indicates the charging status and device abnormalities by turning on or blinking the LED light (main light source) and the indicator LED (Red/Green).

<p><b>Blinking of the LED light (main light source) indicates the battery capacity status.</b></p>	<p>LED light blinks several times and returns to steady illumination</p>	<p>▶ The battery level has reached approximately 20% and 10%. Please recharge it.</p>
	<p>LED light blinks several times and then turns off</p>	<p>▶ The battery is depleted. Please recharge it.</p>
<p><b>The green indicator inside the USB cover shows the charging status.</b></p>	<p>Green indicator is slowly blinking</p>	<p>▶ This indicates that charging is in progress.</p>
	<p>Green indicator is solidly lit</p>	<p>▶ This indicates that charging is complete.</p>
<p><b>Error message</b></p> <p><b>The red indicator inside the USB cover indicates errors.</b></p> <p>If you notice any of the following signs, please follow the appropriate steps listed on the right.</p>	<p>Red indicator flashes 3 times repeatedly at 1-second intervals</p>	<p>▶ This indicates an abnormal temperature of the unit or battery. Place it in an environment at 41 to 95°F (5 to 35°C) and allow it to return to a normal temperature.</p>
	<p>Red indicator flashes 2 times repeatedly at 1-second intervals</p>	<p>▶ The input voltage or input power during charging is insufficient. Charge using a charger that meets the following specifications.</p> <ul style="list-style-type: none"> <li>— Compliant with USB Type-C standard</li> <li>— Not compatible with PD (fast charging)</li> <li>— Current 1.5 A or higher</li> </ul>

## BUILT-IN LITHIUM-ION BATTERY

- The battery is a consumable part.
- It can be charged and discharged approximately 500 times, through lifespan varies with use and environment.
- If operating time drops significantly, the battery may have expired, in which case please contact BALMUDA Support.

- CONTAINS LITHIUM-ION BATTERY. BATTERY MUST BE RECYCLED OR DISPOSED OF PROPERLY.



## SPECIFICATIONS

Dimensions	approx. W174 mm x $\phi$ 113 mm (exclude the lanyard and USB cover closed.)
Weight	approx. 1.5 kg
Power consumption	Up to 8 W (when the lantern is lit and charged at the same time)
Battery type	Lithium-ion battery 3.8V/2500 mAh
Dimensions of Battery	approx. W50.1 mm x D44.1 mm x H10.2 mm (except the harness)
Battery charging time*	approx. 2.5hours
Battery runtime*	Approx. 4 to 65 hours (maximum illuminance to minimum illuminance)
IP rating	IP67
Brightness	approx.195 lm
Operating / Charging / Storage temperature	41 - 95°F (5 - 35°C)
Dimming function	Stepless dimming
Input current	1.6A

\* The value may vary depending on the operating status or environment.

To view our warranty terms, privacy policy, and product support information, please click here.

- 
- **Warranty** <https://us-lovefrom.balmuda.com/pages/warranty>
  - **Privacy policy** <https://us-lovefrom.balmuda.com/policies/privacy-policy>
  - **Support** <https://www.balmuda.com/lovefrom-balmuda/support/>
-